

PREMIUM COMPOSITE PANELS



YOUR VISION. ACCOMPLISHED.

A2

Non-Combustible
Metal Composite Panels

FR

Fire-Retardant
Metal Composite Panels



An aerial photograph of Dubai, United Arab Emirates, at dusk. The Burj Khalifa is the dominant feature on the left, its spire reaching into a blue and orange sky. The city's lights are beginning to glow, and the surrounding skyscrapers and infrastructure are visible. A red horizontal line is positioned above the text.

EMERGE UK

committed
to safe buildings

THE ADVANTAGES
why emerge?



15 YEARS

OF RICH EXPERIENCE
IN METAL COMPOSITES



2000 MM. WIDTH

AVAILABLE TO MEET
YOUR REQUIREMENTS



3 MILLION SQ.M.

OF ANNUAL GLOBAL SALES



15 TO 20 YEARS

OF WARRANTY

YOUR VISION. ACCOMPLISHED.

At the heart of every beautiful architecture in the world are metal composite panels. At Emerge, it is our strong belief that metal composite panels are essential to a building's design and functionality.

The promoters of Emerge have an impressive experience and expertise of over 15 years in the building facade industry with a track record of existing annual sale of 3 million sq.m. per annum.

With a clear vision and resolute mission, Emerge has set up a manufacturing plant in UAE to lead the metal composite panel industry.

Complying with the international quality standards and implementing the quality management system, Emerge produces impeccable quality panels in a world-class manufacturing unit that is operated and supervised by the finest professionals in the industry.

The installed capacity of the Emerge manufacturing facility is 2.5 million sq.m. per annum and is diligently supported by team of skilled technicians, managers, and executives who work meticulously to achieve new milestones of product excellence. Our advanced production facilities are highly equipped with latest machines which use modern technologies to carry out seamless production.

Being a customer centric organization, we strive to meet the stringent demands of the design professionals in the new emerging world of construction. Begin your journey with Emerge and experience new heights of excellence.







CORPORATE ETHOS

the emerge way

The Vision and Mission

Emerge aims to become the most trusted and respected brand in the facade industry. With our quality and consistency, we work towards becoming one of the most favoured and sought after companies to work with. With a plan to turn our quality into success, we aspire to grow globally and have a presence in more than 20 countries by the year 2022.

The Quality Approach

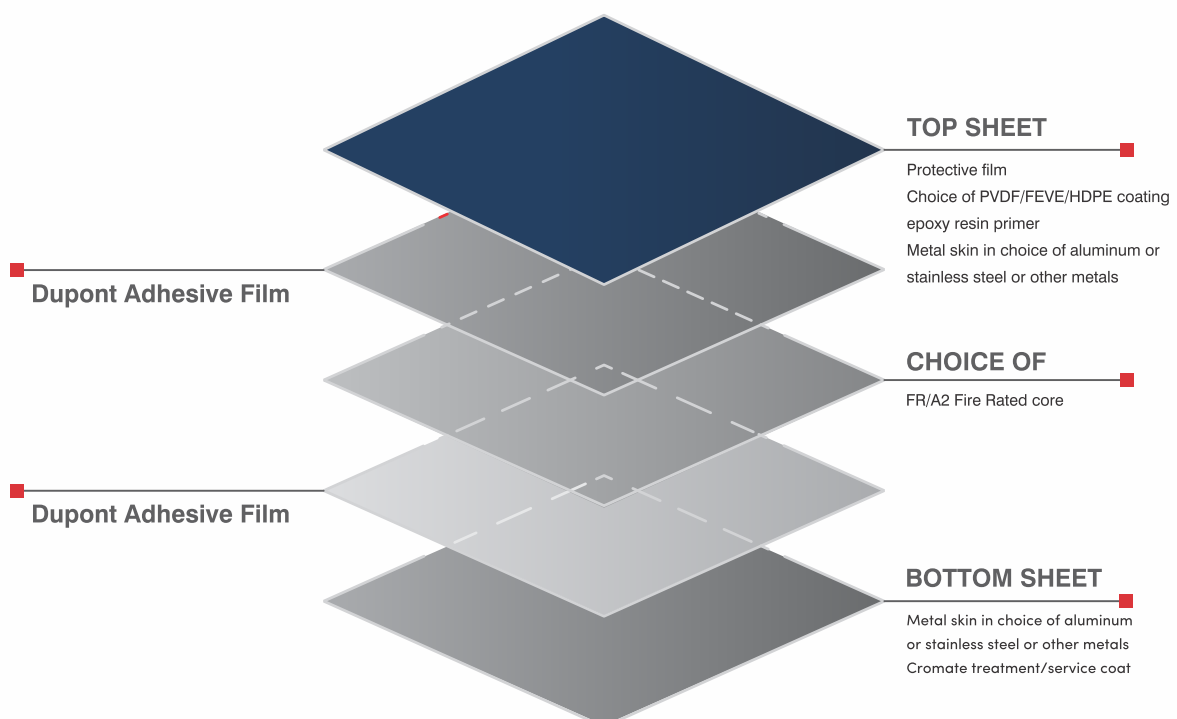
At Emerge, we implement a strong quality management culture at every step. There are multiple quality check-points and everything undergoes expert supervision right from procurement of raw materials to the manufacturing process in order to meet the stringent market requirements and timely deliveries. Our process-oriented approach ensures adherence and consistency in our performance and product quality. We, at Emerge, ensure that the quality is delivered on time, every time.

EMERGE METAL COMPOSITE PANELS

for safe and stunning buildings

The wide range of Emerge metal composite panels are available in various shades and types that provide the designer the choice of creating an inspiring building design. The compound materials of metal composite panels are layered between two thin aluminum sheets which are available in two varying degree of applications based on their fire rating.

PRODUCT COMPOSITES



EMERGE UK

types of emerge metal composite panels

A2

Non Combustible

Emerge A2 is a superior, fire-safe metal composite panel, rated at the fire safety grade of A2. The environment-friendly panel comprises of a non-combustible core in the middle for the safety of your buildings.

FR

Fire Retardant

Emerge FR is composed of a fire-retardant core sandwiched between two skins of aluminum. It passes most countries' fire and life safety codes. The core consists of approx. 70% of non-combustible minerals. Emerge FR is also comparatively lighter than solid aluminium panels.

The fire rated cores of Emerge A2 and FR ACM meet the high standards of the fire regulations like ASTM E84 – Class A, EN 13501-1, ASTM D 1929-16, NFPA 285, BS 8414-1 and other international building codes, SASO. It also complies with the latest edition of UAE fire & life safety guidelines.

EMERGE METAL COMPOSITE PANELS

metal series



AL-101

Bright Silver



AL-102

Metallic Silver



AL-103

Dark Grey Silver



AL-104

Silver Champagne



AL-105

Bronze Champagne



AL-106

Super Gold



AL-107

Bronze Gold



AL-108

Magic Gold

Disclaimer: The colour samples displayed above are for reference purpose only. Please check the actual colour of the material before ordering. To avoid any colour discrepancies, please place the total requirement for a building in one single order.



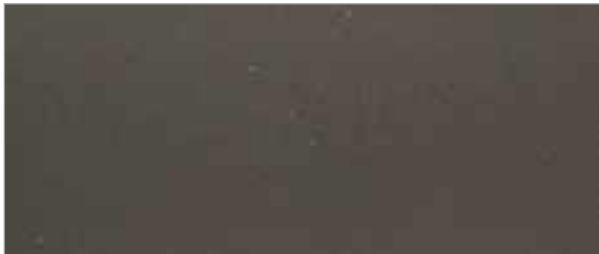
AL-109

Metallic Copper



AL-110

Metallic Brass



AL-111

Dark Titanium



AL-112

Black Metallic



AL-113

Wine Metallic



AL-114

Rose Metallic



AL-115

Silver Mirror



AL-116

Brush Silver

EMERGE METAL COMPOSITE PANELS

metal series



AL-101

Bright Silver



AL-102

Metallic Silver



AL-103

Dark Grey Silver



AL-104

Silver Champagne



AL-105

Bronze Champagne



AL-106

Super Gold



AL-107

Bronze Gold



AL-108

Magic Gold

Disclaimer: The colour samples displayed above are for reference purpose only. Please check the actual colour of the material before ordering. To avoid any colour discrepancies, please place the total requirement for a building in one single order.



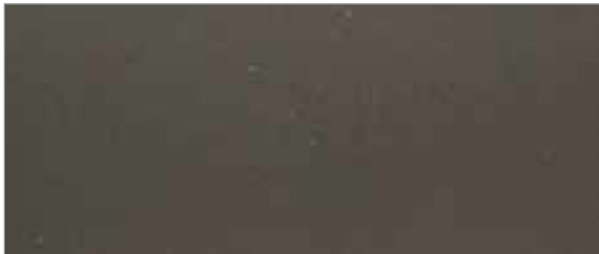
AL-109

Metallic Copper



AL-110

Metallic Brass



AL-111

Dark Titanium



AL-112

Black Metallic



AL-113

Wine Metallic



AL-114

Rose Metallic



AL-115

Silver Mirror

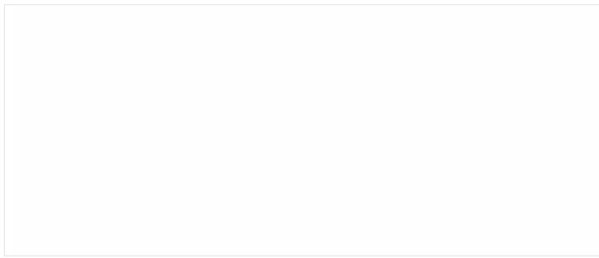


AL-116

Brush Silver

EMERGE METAL COMPOSITE PANELS

solid series



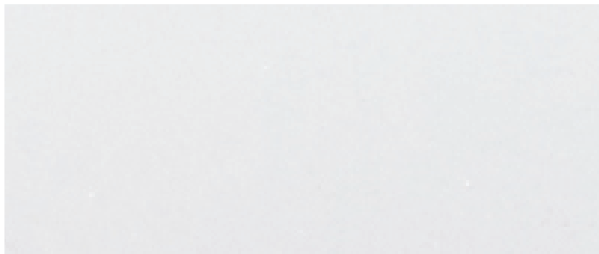
AL-117

Bright White



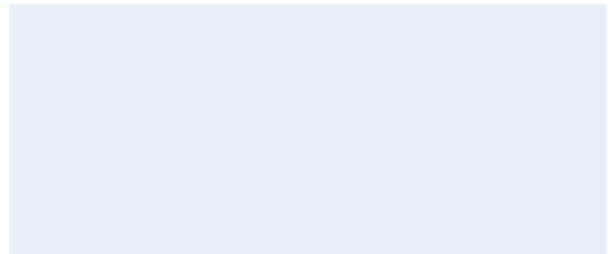
AL-118

Ivory White



AL-119

Sparkle White



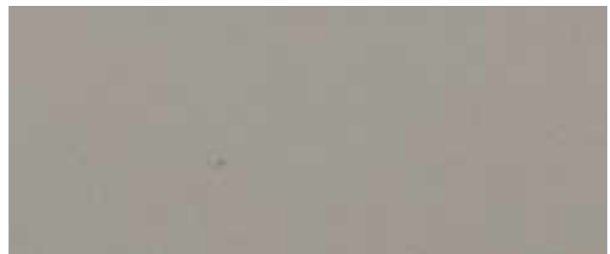
AL-120

Signal White



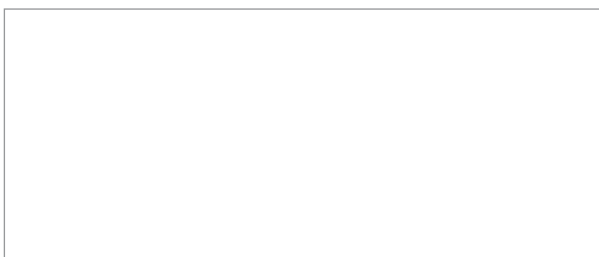
AL-121

Apricot White



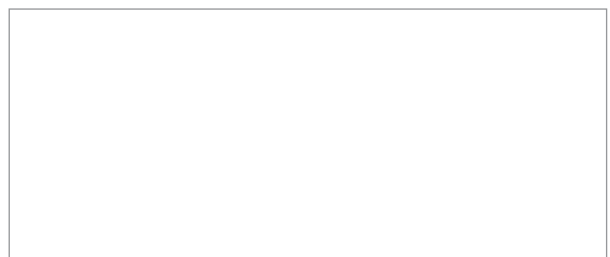
AL-122

Cream White



AL-123

Coming Soon



AL-124

Coming Soon



AL-125

Charcoal Black



AL-126

Dark Grey Black



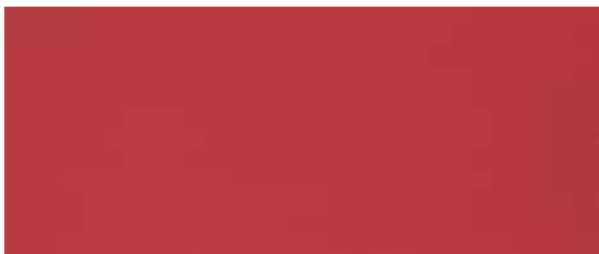
AL-127

Pure Yellow



AL-128

Natural Green



AL-129

Signal Red



AL-130

Burgundy



AL-131

Royal Blue

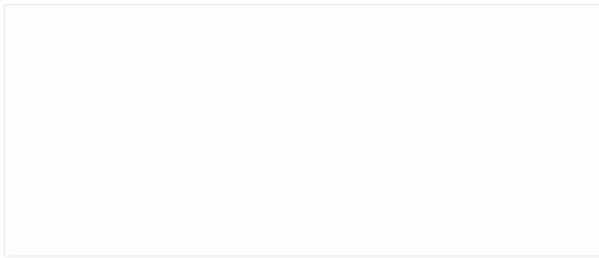


AL-132

Light Blue

EMERGE METAL COMPOSITE PANELS

solid series



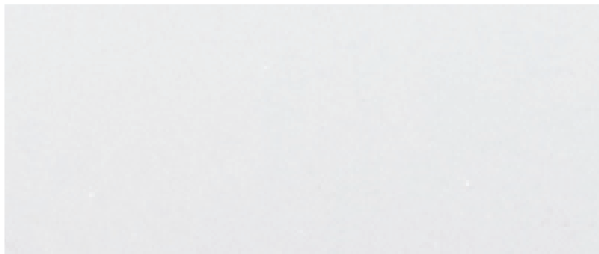
AL-117

Bright White



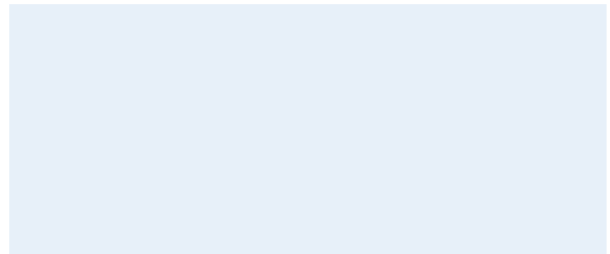
AL-118

Ivory White



AL-119

Sparkle White



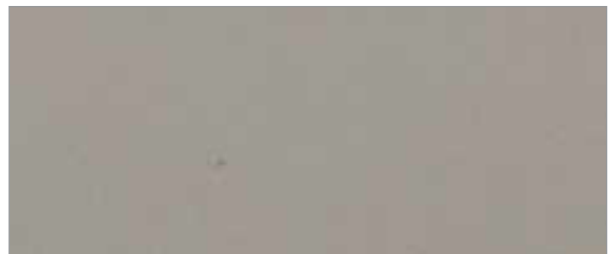
AL-120

Signal White



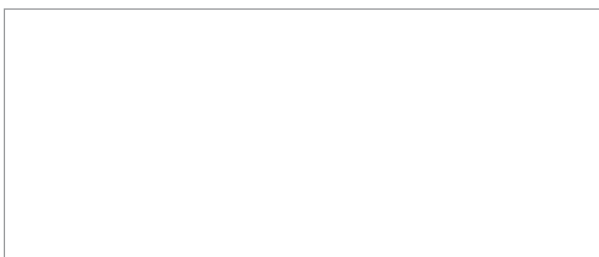
AL-121

Apricot White



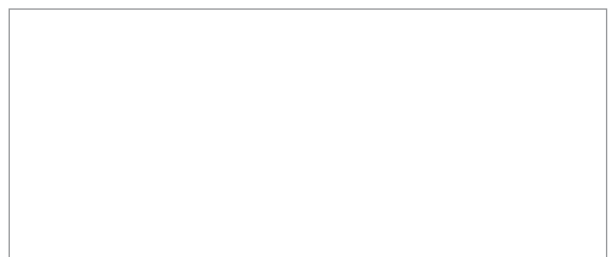
AL-122

Cream White



AL-123

Coming Soon



AL-124

Coming Soon



AL-125

Charcoal Black



AL-126

Dark Grey Black



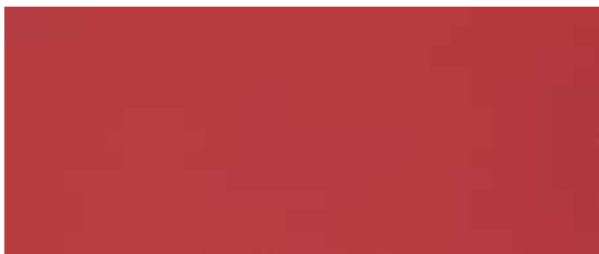
AL-127

Pure Yellow



AL-128

Natural Green



AL-129

Signal Red



AL-130

Burgundy



AL-131

Royal Blue



AL-132

Light Blue

EMERGE METAL COMPOSITE PANELS

key technical specifications

S.No	Specifications	FR		A2	
		4mm	6mm	4mm	6mm
Product Composition					
1	Alloy & Hardness (EN 573-3)	EN AW 3003 H16			
2	Skin Thickness, mm	0.3mm - 0.5mm		0.5mm	
3	Core Material	Fire Retardant Core		Non Combustible Core	
4	Panel Weight, Kg /mm ² (±0.5mm)	7.3	10.5	8	11
Product Tolerances					
5	Panel Thickness	±0.2mm	±0.3mm	±0.2mm	±0.3mm
6	Panel Width, (1000, 1250,1500mm)	±2mm			
7	Panel Length, (Upto 6000mm)	±4mm			
8	Bow (Length or width)	Max 0.5%			
9	Squareness	Max 5mm			
Mechanical Characteristics					
10	Tensile Strength, Mpa (ASTM E8)	50	30	45	27
11	0.2% Proof Stress, Mpa (ASTM E8)	45	27	42	23
12	Elongation, % (ASTM E8)	5	2	3.5	2
13	Modulus of Elasticity, Mpa (ASTM E8)	70,000			
Thermal Characteristics					
14	Linear Thermal Expasion, mm/m/100 °C	2.4			
15	Deflection Temperature, °C (ASTM E413)	≤120			
16	Temprature Resistance, °C (ASTM C 518)	-50....+80			
Acoustical Characteristics					
17	Sound Transmission Loss (Rw), dB	26			
Reaction to Fire					
18	Surface Burning Charecterstics, (ASTM E84)	Class A			
19	Reaction to Fire, (EN 13501-1)	Class B, S1, d0		Class A2, S1, d0	
20	Self Ignition Temperature Not less than 343°C(ASTM D1929)	Pass			
21	Fire Propagation (BS 476 Part 6&7)-UK	Part 6 Class 0 & Part 7 Class 1			
22	ISMA, (NFPA 285)	Pass			
Surface Finish Characteristics					
23	Paint Finishes (AAMA 2605-13)	PVDF/FEVE/HDPE (2 Coat)			
24	Deflection Temperature, °C (ASTM E413)	20~35% for PVDF & 20~80% for FEVE/HDPE			
25	Pencil Hardness, (AAMA 2605-13)	Min HB			
26	Back Side Service Coating	PE			

EMERGE UK

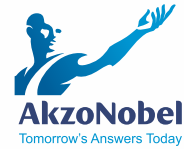
certifications & approvals



UAE Civil Defence



PAINT SUPPLIER



EMERGE UAE

EMERGE METAL INDUSTRY LLC

SALES OFFICE

Warehouse 1

Sharjah Industrial Area - 13

Near Alico, Sharjah - UAE

T +971 6532 2244

M +971 54793 6050

E info@emergemetal.com

W www.emergemetal.com

MANUFACTURING PLANT

R 288 AL Ghail Industrial Area

Ras Al Khaimah, UAE

EMERGE UK

158 Joel Street, Pinner Ha5 2PE

Middlesex, United Kingdom

E uk@emergemetal.com

W www.emergemetal.com

EMERGE INDIA

15th Floor, 17 Vijaya Building

Barakhamba Road, New Delhi - 110001

E info@emergemetal.com

W www.emergemetal.com

UK | UAE | INDIA